

## SPRAY CHARACTERISTICS

- Uniform distribution of droplets in solid cone spray pattern.
- Droplet size is larger than in hollow cone nozzles of equal capacity.
- Spray droplet size increases as flow increases at the same pressure.

## CONSTRUCTION AND MATERIALS

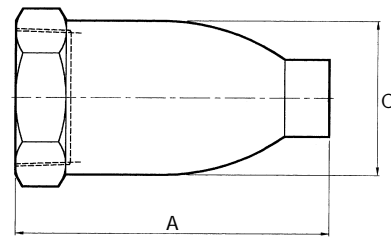
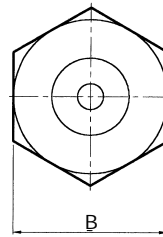
- One piece, cast body with removable vane type core.
- Core imparts the necessary swirl to produce a solid spray pattern.
- Hexagon body for easy installation eliminates distortion of orifice during installation.
- Available in Cast Iron, Stainless Steel and Gunmetal as standard.
- Threads are Female BSPT.
- Other materials to special order.

## ORDER EXAMPLE

2" CM 105 Gunmetal.

### DIMENSIONS AND WEIGHTS

Thread Size	Dimensions (mm)			Weight (Kg)
	A Hex	B	C	
1 1/4"	95	48	48	0,6
1 1/2"	108	56	54	0,7
2"	136	73	67	1,6
3"	200	98	98	5,9
4"	178	127	121	7,5
5"	191	165	152	11,6
6"	276	197	184	20,0
8"	318	241(Oct)	235	35,0



Maximum Recommended Pressure:  
14 Bar.G. (Metal), 7 Bar.G. (Plastic).

## CAPACITY CHART

NOZZLE NUMBER	BSPT THREAD SIZE								FLOW RATE IN LITRES/MIN AT BAR.G														SPRAY ANGLES (°) AT BAR.G			
	1/4	1/2	2	3	4	5	6	8	0,2	0,35	0,7	1	1,5	2	3	4	5	6	7	,35	,7	1,5	6			
CM 16									25,9	33,3	45,7	53,6	64,4	72,3	87,6	99,6	110	119	127	55	60	65	45			
CM 22									34,2	44,0	59,9	70,1	84,3	96,4	115	131	145	153	168	65	70	75	48			
CM 27									43,4	55,8	76,4	89,3	106	121	146	166	184	200	213	65	70	75	50			
CM 33									52,2	67,7	91,9	108	129	146	177	202	222	243	259	65	70	80	52			
CM 29									45,1	57,6	79,6	94,2	112	128	154	177	197	212	229	55	60	60	50			
CM 35									36,2	70,0	96,5	114	137	156	187	216	238	259	278	60	60	60	55			
CM 42									66,1	86,0	117	137	168	191	229	261	289	317	339	70	70	70	60			
CM 48									74,1	96,5	133	158	188	216	259	298	326	355	381	75	75	70	65			
CM 54									83,5	108	148	175	211	241	288	330	367	398	427	80	85	80	70			
CM 64									96,9	126	175	206	248	284	341	389	437	473	503	70	73	75	-			
CM 71									109	142	195	231	279	321	335	440	488	536	572	71	77	79	-			
CM 81									123	161	222	261	316	362	436	504	553	603	650	70	75	75	-			
CM 90									137	181	250	294	353	408	492	558	618	679	723	85	85	85	-			
CM 98									149	195	270	316	385	451	526	607	670	728	782	88	88	89	-			
CM 105									160	209	288	339	413	473	568	652	718	781	833	94	94	94	-			
CM 119									187	240	330	396	473	509	650	746	822	894	954	70	73	75	-			
CM 155									245	306	430	518	573	594	788	905	996	1083	1155	80	83	85	-			
CM 193									299	386	535	638	767	881	1055	1210	1333	1450	1547	85	87	90	-			
CM 232									361	462	636	772	923	987	1269	1457	1604	1745	1861	90	93	95	-			
CM 242									379	485	686	821	966	1040	1328	1525	1679	1826	1948	95	95	95	-			
CM 156									254	311	424	513	620	719	853	979	1078	1172	1250	45	47	50	-			
CM 230									361	467	631	768	919	1098	1264	1451	1598	1738	1852	50	55	55	-			
CM 318									500	631	846	1040	1264	1491	1738	1995	2197	2390	2549	60	65	67	-			
CM 432									661	832	1144	1388	1714	2080	2357	2706	2980	3241	3457	75	80	83	-			
CM 628									924	1181	1633	2009	2500	2863	3438	3946	4346	4727	5042	90	95	96	-			
CM 534									780	996	1378	1695	2110	2416	2901	3330	3668	3989	4255	70	73	75	-			
CM 643									938	1199	1659	2040	2540	2908	3493	4008	4416	4802	5122	75	80	85	-			
CM 720									1057	1350	1868	2298	2860	3275	3933	4514	4972	5407	5768	80	90	95	-			
CM 815									1190	1520	2103	2587	3220	3687	4428	5082	5598	6087	6494	75	78	80	-			
CM 960									1401	1790	2477	3047	3793	4343	5216	5986	6594	7170	7650	84	86	88	-			
CM 1150									1679	2145	2968	3651	4544	5203	6248	7172	7900	8590	9164	90	92	95	-			
CM 1480									2161	2762	3819	4698	5847	6695	8040	9228	10164	11054	11792	100	106	110	-			



SOLID CONE SPRAY

TYPE CM

Contact our Helpline for any special requirements:  
Tel: +44 (0) 151 424 6821  
Fax: +44 (0) 151 495 1043  
e-mail: sales@delavan.co.uk  
Web: www.delavan.co.uk

